

PROFESSIONAL H.264 DVR



Model	Description
ST-RE0404	4 channel realtime DVR model
ST-RE0804	8 channel realtime DVR model
ST-RE1604	16 channel realtime DVR model

Features

New standard for entry level DVR with high performance and competitive price

H.264 compression algorithm ideal for standalone DVR

Realtime live display up to 16 cameras with 720P high definition

400/480 fps recording for CIF and special channel 4CIF realtime recording

Dual encoding streams support, flexible for network transmission and mobile phone monitoring.

Pentaplex function: live, recording, playback, backup & remote access

16 channel simultaneous playback supported

Multiple control methods: Front panel, IR remote controller, keyboard, USB mouse and network keyboard

Smart video detection: motion detection, camera blank, video loss

Smart video detection: motion detection, camera blank, video loss

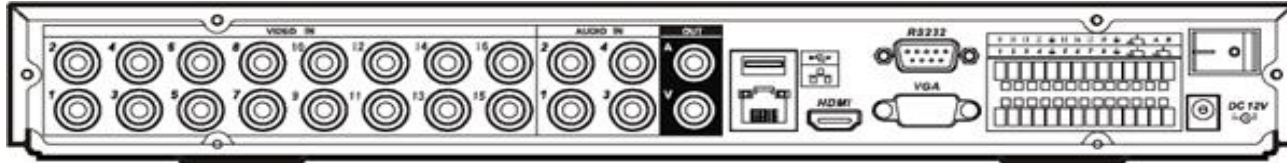
Smart camera settings: privacy masking, camera lock, color setting, and title display

Pan Tilt Zoom and Speed Dome Control: more than 60 protocols supported, preset, scan, auto pan, auto tour, pattern, auxiliary function supported. And with Speed Dome, 3D intelligent positioning function supported

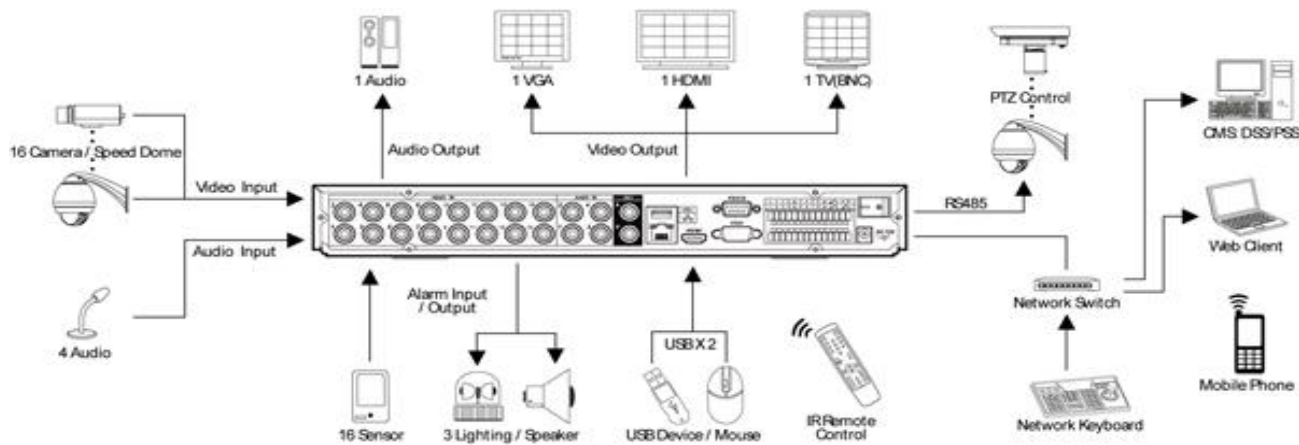
Alarm triggering screen tips, buzzer, PTZ preset, e-mail, FTP upload

Powerful network software: built-in web server, multi-DVR client, MSS (Mobile Surveillance Software for smart phone) & CMS. Networking access for remote live viewing, recording, playback, setting, system status, event log

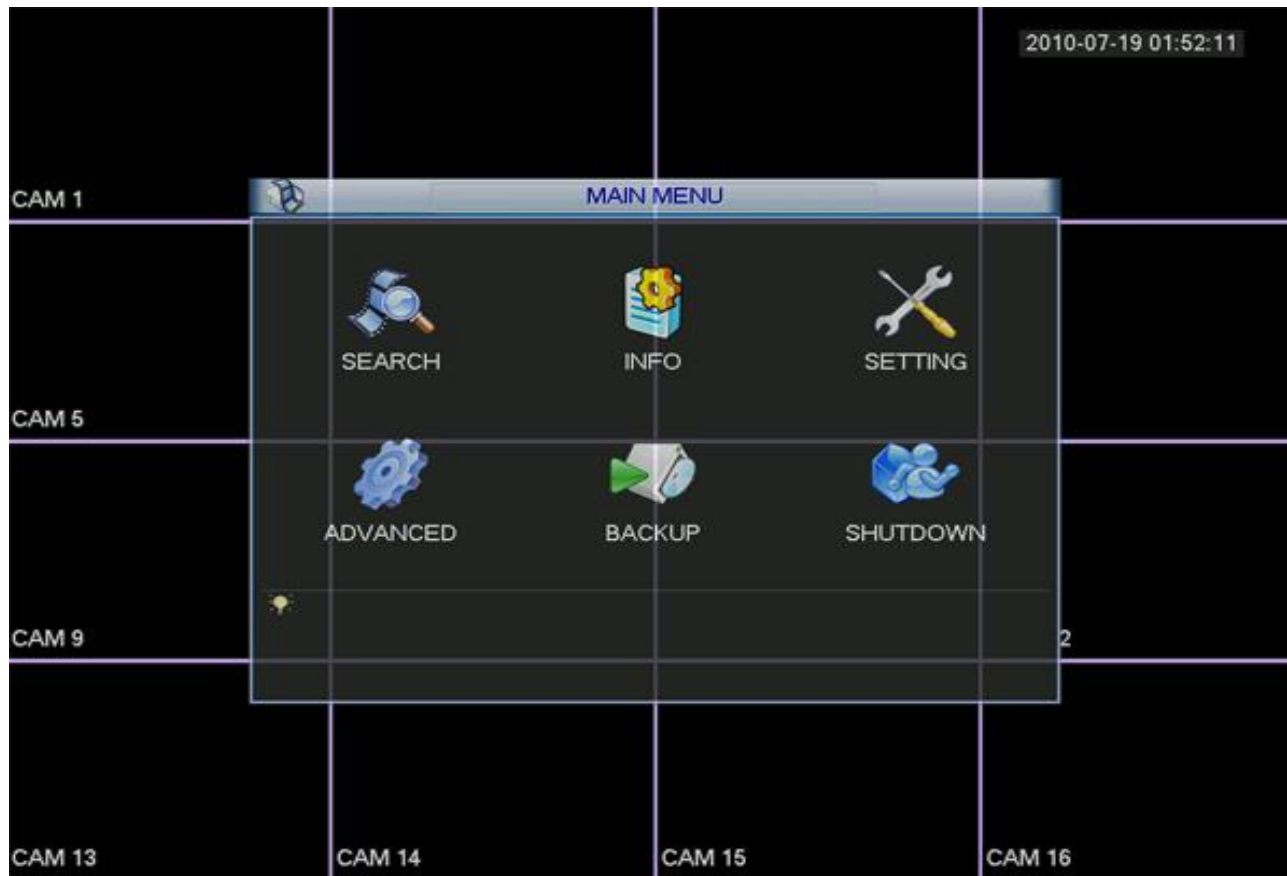
Rear Panel



Connection Sample



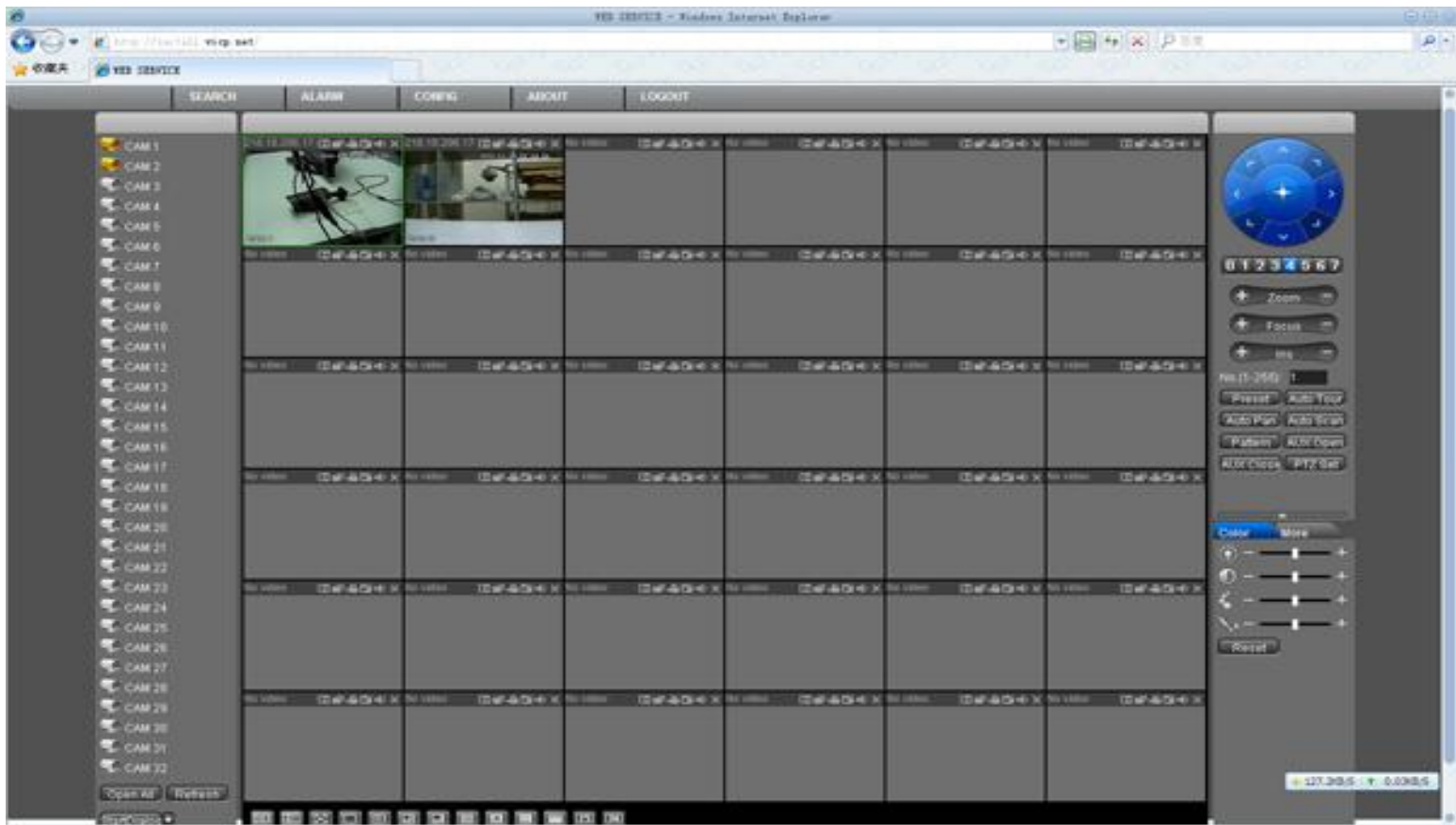
Menu Sample (friendly and nicelook interface, easy to operate)



CMS Sample (Max. 36 cameras in one window at one time, manage thousands cameras by DSS)



IE Monitoring Sample (Max. 36 cameras in one window at one time)



Mobile Monitoring Software (Support iPhone/Android/Blackberry/Symbian/Windows CE O/S)



Specifications

System			
Main Processor	High performance embedded microprocessor		
Operating System	Embedded LINUX		
System Resources	Pentaplex function: live, recording, playback, backup & remote access		
User Interface	GUI, on-screen menu tips		
Control Device	Front panel, USB mouse, keyboard, IR remote control, network keyboard		
Input Method	Numeral/Character/Denotation		
System Status	HDD status, data stream statistics, log record, bios version, on-line user etc.		
Video			
Video Input	4/8/16 channel, BNC, 1.0Vp-p, 75Ω		
Video Output	1 channel TV output, BNC, 1.0Vp- p, 75Ω, 1 VGA output, 1 HDMI output		
Video Standards	PAL(625Line, 50f/s), NTSC(525Line, 60f/s)		
Video Compression	H.264		
Video Resolution	Format	NTSC	PAL
	D1(4CIF)	704 X 480	704 X 576
	CIF	352 X 240	352 X 288
	QCIF	176 X 120	176 X 144
Video Recording	CIF/QCIF: PAL 1f/s~25f/s, NTSC 1f/s~30f/s;		
	4CIF: PAL 1f/s-25f/s NTSC 1f/s-30f/s;		
	(1st channel of RE0404, 1st channel of RE0804, 1st and 9th channels of RE1604 can support D1 realtime recording)		
Video Display Split	Full and multiple screen display, 1 / 4 / 9 / 16		
Tour Display	Support		
Image Quality	1~6 level(level 6 is the best)		
Privacy Masking	4 self-defined four-sided zones for privacy masking for each camera		
Camera Lock	Camera locked for users		
Camera Adjustment	Adjust color according to different time period		
Video Information	Camera title, time, video loss, camera lock, motion detection, recording		
TV Output Adjustment	Adjust TV output color & display zone		
Audio			
Audio Input	4/8/4 channel, BNC, 200-2800mV, 30KΩ		
Bidirectional Talk Input	1 channel, BNC, 200-2800mV, 30KΩ, same with the 1st channel		
Audio Output	1 channel, BNC, 200-3000mv, 5KΩ		
Audio Compression	G.711		
Video Detection & Alarm			

	Zones: 396 (22*18) detection zones
	Sensitivity: 1~6 (level 6 is highest)
Motion Detection	Trigger recording, PTZ movement, tour, alarm, email
Video Loss	Trigger recording, PTZ movement, tour, alarm, email
Camera Blank	Trigger recording, PTZ movement, tour, alarm, email
	4/8/16 channel, programmable, ground, manual open/closed
Alarm Input	Trigger recording, PTZ movement, tour, alarm, email
Relay output	3/3/3 channel, 30VDC, 1A, NO/NC, form-C
Hard Disk	
Hard Disk	1 SATA port, 1 HDD supported
Space Occupation	Audio: 14.4MB/H Video: 56~500MB/H
HDD Management	Hard disk hibernation technology, HDD faulty alarm
Record, Playback & Backup	
Recording Mode	Manual, continuous, video detection (including motion detection, camera blank, video loss), Alarm
Recording Priority	Manual >Alarm >Video Detection >Continuous
Recording Interval	1 to 120 minutes (default: 60 minutes), Pre-record up to 30 seconds, Post-record up to 5 minutes
Overwrite Mode	Support
Search Mode	Time/Date, Alarm, Motion Detection & exact search (accurate to second)
Playback	16 channel playback simultaneously, pause, stop, rewind, fast play, slow play, next file, previous file, next camera, previous camera, full screen, repeat, shuffle, backup selection
Digital Zoom	Selected zone can zoom into full screen during playback
Backup Mode	Flash disk/ USB HDD/ USB CD/DVD-RW/ Network download
Network	
Interface	RJ-45 Port (10/100M)
Network Functions	TCP/IP, UDP, DHCP, DNS, IP Filter, PPPOE, DDNS, FTP, Email, Alarm Server
Remote operation	Monitor, PTZ control, playback, system setting, file download, log information
Auxiliary Interface	
USB Interface	2 ports, 1 for mouse control, 1 for backup
RS232	keyboard, PC communication
RS485	PTZ control
Environmental	
Power Supply	220V 50Hz / 110V 60Hz
Power consumption	25W
Working Temperature	-10 ~+55
Working Humidity	10%~90%
Atmosphere Pressure	86kpa~106kpa
Dimension	1U, 375mmx285mmx45mm (W*D*H)
Weight	2.35KG(without HDD)
Mounting	Desktop or rack